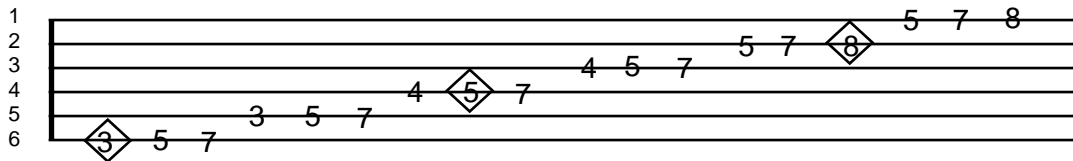
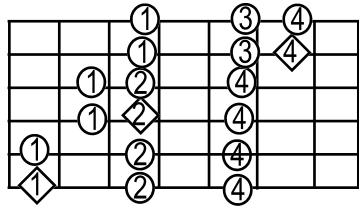


Diatonic Modes Exercise

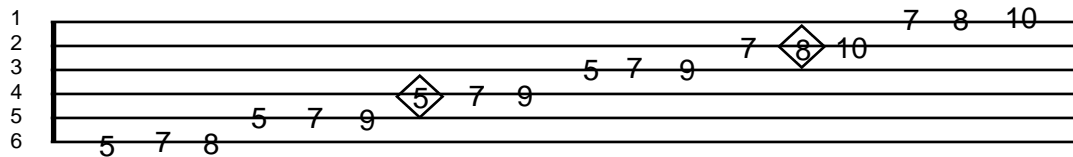
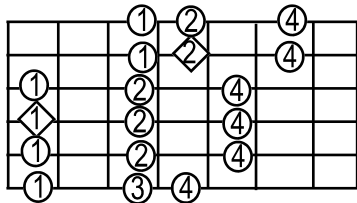
There are several different ways to think about various musical structures on the guitar. Many guitarists refer to scale or lead patterns as “shapes” like a picture or some other visual representation on the fret board. In the end however each structure has a musical definition relating to a group of specific pitch classes.

The following patterns were built with a set of rules which could be used for any diatonic key. Three tones are played on each string. Each pattern begins in ascending diatonic numbered tone order with the first finger playing the next ascending tone on the sixth string. These ascending patterns follow modal order as well; however each pattern can be played for all modes in all keys by wrapping octaves around the fret-board. The key of “G” is tabbed out in ascending diatonic degree order. To use the patterns for another key, position your first finger on the matching diatonic degree on the sixth string.

*First Degree:
“Ionian”*



*Second Degree:
“Dorian”*



*Third Degree:
“Phrygian”*

