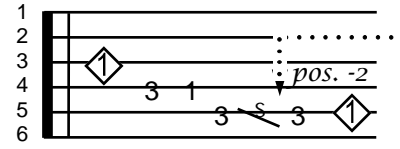
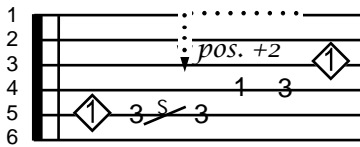
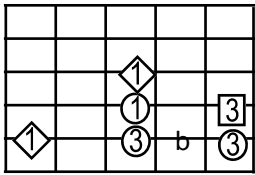
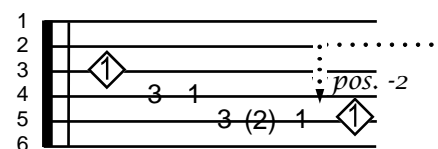
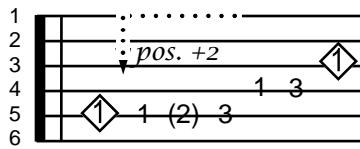
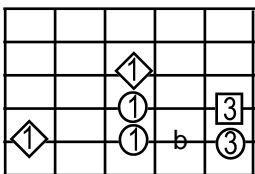


## FIFTH STRING ROOT PENTATONIC PATTERN



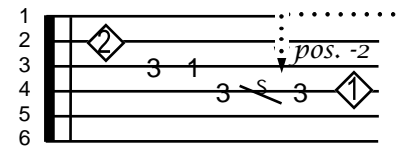
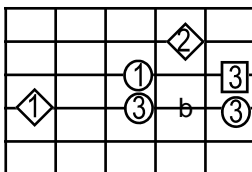
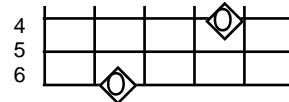
This is the pentatonic major pattern beginning on the fifth string root. The position of the “blue note” is shown by “b”. The relative minor is indicated by the square. The only difference between this pattern and the pentatonic beginning on the sixth string is the position of the root and shifting of strings.



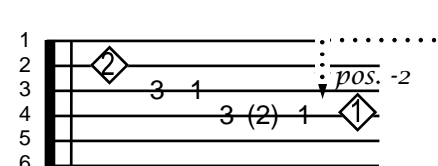
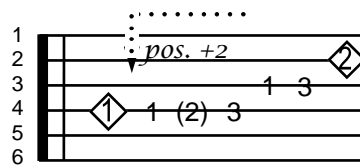
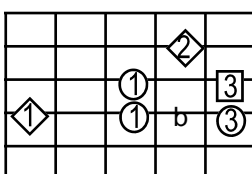
The above is the same fifth string root note pattern except uses a different fingering option.

## FOURTH STRING ROOT PENTATONIC PATTERN

The fourth string root is easily found as the octave of the sixth string root which is two frets higher.



The above set of diagrams illustrate the pentatonic major pattern beginning on the fourth string root. The position of the “blue note” is shown by “b”. The relative minor is indicated by the square. The only difference between this pattern and the pentatonics beginning on the sixth and fifth strings is the shifting of the tone on the second string required by the relative tuning of the second and third strings.



Again, the above is the same fourth string root note pattern with the exception of using a different fingering option.