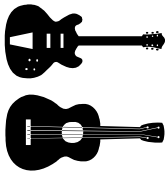


Pentatonic Connectors

The basic lead patterns can be thought of as being combinations of the pentatonic scale. The five tones can be connected by the octave. Therefore, each octave can be considered the starting point (or ending point) of a new pattern. By thinking in terms of pentatonics and octaves, you can gain great mobility across the range of the fretboard. The major and minor pentatonic scales can be reduced to a set of patterns beginning with a root note on any string. Each of these can then be used at corresponding root notes throughout the range of the guitar.

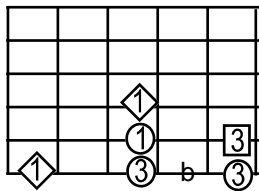


All lead patterns can connect throughout the range of the guitar using the major or minor tone centers of the key.

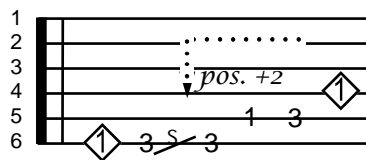
The tone centers are the root notes and the octaves of each pattern.

The pentatonic connectors are presented in the following sections with each showing a diagram of the relative strings and frets followed by ascending and descending positional TAB representations. Memorize each pattern. Practice each in ascending and descending sequence as well as combinations. Then practice connecting the patterns using the root notes, octaves and unisons on adjacent strings.

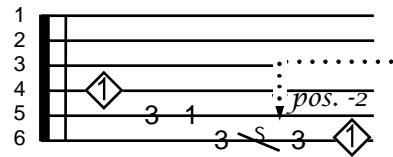
SIXTH STRING ROOT PENTATONIC PATTERN



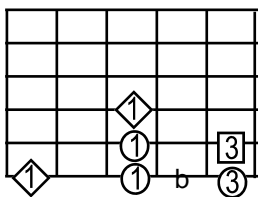
The above pattern is the pentatonic major beginning on the sixth string root. The position of the "blue" note is shown by "b". The relative minor is indicated by the square.



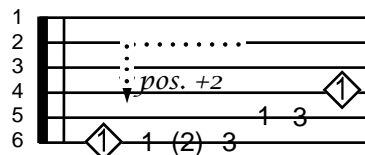
The above fingering patterns use a slide through the "blue" note. The patterns below add the "blue" note to the actual sequence as an option. Notice that the positional changes vary with the choice of movement.



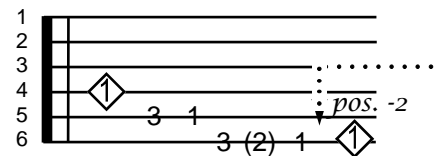
This fingering changes position using a downward slide through the blue note.



The above pattern shows a different fingering option. This option produces a clearer sound for each tone and thus creates a different effect.



The "blue" note is optional in the above TAB.



This fingering shows the option of picking through the blue note and then changing position by ending on the root. Based on style or preference, you can either play or omit the blue note.