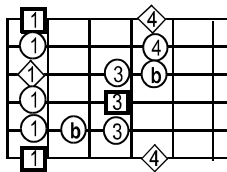


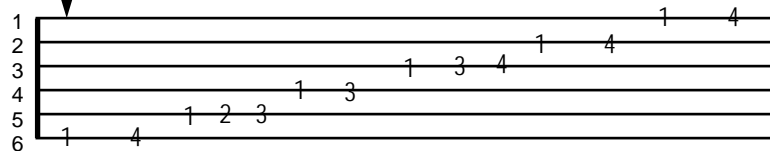
# The "Blue" Note

The "blue" note is a tone that is not in the natural harmonic structure of the tone center system. Theoretically, it involves adding the minor third to a major system which is technically the flatted fifth to its relative minor system. It creates a special sound that is perfectly out of place evoking a "crying" need for resolution. The effect is the main characteristic of the style called "the blues". Many forms of guitar music are derivatives of the blues and therefore the note is used in many improvised guitar solos.

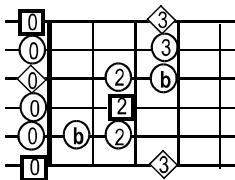
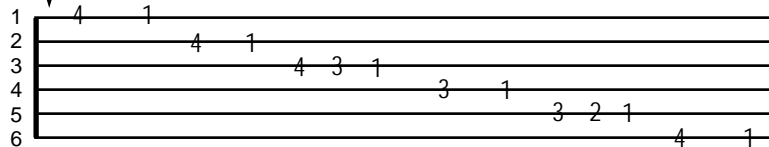
On the guitar the blue note can be added by just playing it as another note of the lead pattern. It can also be effectively slid into either from a lower fret or higher fret. It can also be added by bending the string at the fret just below the blue note causing the pitch of the tone to move smoothly to the blue note. You can also bend or slide through the blue note between the two natural occurring notes of the lead pattern a half step higher and a half step lower. Examples are on the next page.



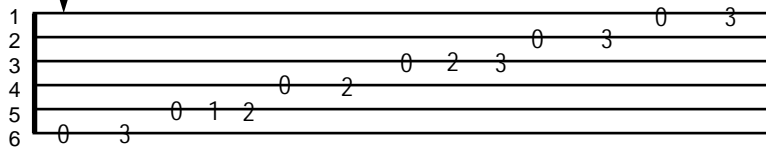
*This pattern, based on the sixth string root, played in fifth position is the basic "Am" or blues "C" major with the "blue" note.*



*The same pattern descending.*



*This pattern is played in first position and is the basic pattern for "Em" or blues and "G" major including the "blue" note.*



*The same pattern descending.*

