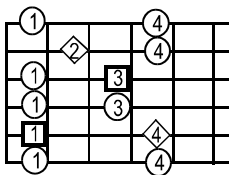


Basic Lead Pattern - 5th String Root

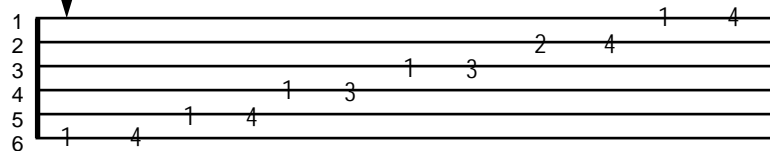
The fifth string root basic pattern consists of the same set of five pentatonic tones but is played in the position of the tone center on the fifth string. *For example: "Am" sixth string root pattern is played at 5th position but the fifth string root pattern is played at the twelfth.*

The fifth string root basic pattern is often used to play mid fretboard leads in "E minor and G major" at seventh position, "D minor and F major" at fifth position as well as leads in "E major" at fourth position and "B minor and D major" at second position. Other mid range fifth string keys can also be accommodated but the previous ones are the most popular.

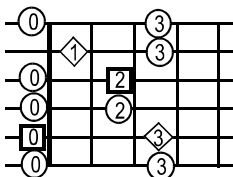
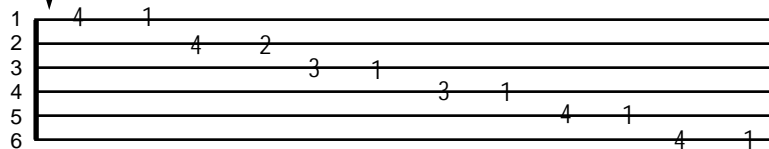
It is also used in the higher registers on electric guitar and to supplement the sixth string root patterns especially in the key of "A minor and C major" at twelfth position. The octaves (same only higher) of the previously mentioned mid range fifth string keys are also quite common on electric guitar.



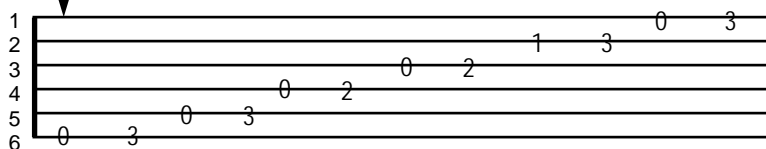
This pattern, based on the sixth string root, played in fifth position is the basic "Dm" or blues "F" major.



The same pattern descending.



This pattern is played in first position and is the basic "Am" or blues "C" major which is one of the most often used keys of the guitar.



The same pattern descending.

