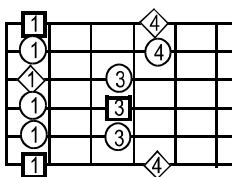


Basic Lead Pattern - 6th String Root

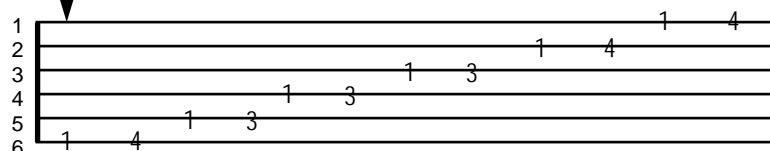
The following is the basic sixth string root note pentatonic (five tone) pattern.

The minor key tone center is the numbered note in the square and the diamond is major. As the position changes, the corresponding key of the pattern changes accordingly. Memorize and practice these patterns daily in as many positions as possible.

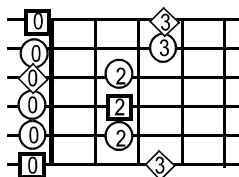
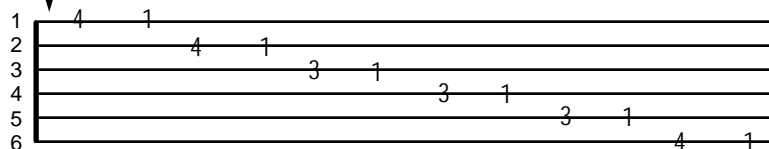
Treat the pattern as a “shopping basket” of tones instead of just a scale to be played in sequence. Practice the patterns by working with each string and then by groups of two or more strings. Just as you would go on a trip, start at home (the tone center) and then venture out and return. Try varying rhythm as you go. Instead of just playing the notes in sequence, try playing multiple repetitions of the individual notes, especially the tone center.



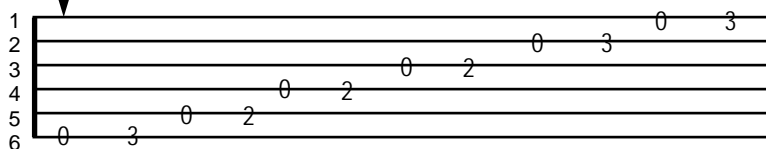
This pattern, based on the sixth string root, played in fifth position is the basic “Am” blues or “C” major.



The same pattern descending.



This pattern is played in first position and is the basic “Em” blues or “G” major which is one of the most often used keys of the guitar.



The same pattern descending.

